

## Official Identification for Swine

*Official identification may not be removed from an animal once it is applied.*

### National Uniform Ear Tagging System (NUES)

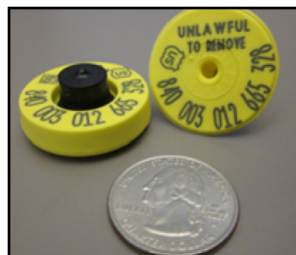
Begins with the official state number – '41' for Minnesota.

- In compliance with federal law, metal NUES tags **must display the U.S. shield** if applied to an animal March 11, 2015 or after
- Purchase plastic tags - Call Leedstone at (877) 608-3877.
- Smaller metal NUES tags beginning with 'MN' instead of '41' are available for purchase by accredited veterinarians – call National Band and Tag Company at (859) 261-2035.



### Animal Identification Number (AIN) System

- Consists of 15 digits beginning with the official country code - '840' for the United States.
  - In compliance with federal law, AIN tags **must display the U.S. shield** if applied to an animal March 11, 2015 or after.
  - 4-H tags available by contacting your county extension office.
- 15-digit tags beginning with the letters 'USA' or manufacturer-coded tags beginning with any number between 900 – 998 **are only official if applied to the animal prior to March 11, 2015.**



### Premises ID Number (PIN) Tags

- Identifies a sow or boar to the premises they were kept immediately prior to entering slaughter channels; swine must remain in slaughter channels.
- If the tag includes a unique within-herd management number (imprinted by the manufacturer), the tag qualifies as an official ear tag for interstate movement; swine do not need to be in slaughter channels.



### Ear Notching, with Breed Registration

Acceptable if accompanied by documentation listing the breed registration number – pending registrations are not acceptable.

### Slap or Ear Tattoos

- Acceptable for feeding swine.
- A tattoo (or tag) with a monitored herd number or state/national assigned premises number is acceptable.