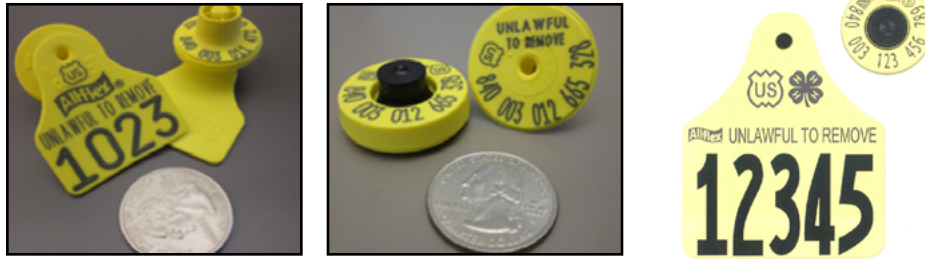


## Official Identification for Cattle and Bison

*Official identification may not be removed from an animal once it is applied.*

### Animal Identification Number (AIN) System

- Consists of 15 digits beginning with the official country code - '840' for the United States
  - o In compliance with federal law, AIN tags must display the U.S. shield if applied to an animal March 11, 2015 or after
  - o 4-H tags available by contacting your county extension office
- 15-digit tags beginning with the letters 'USA' or manufacturer-coded tags beginning with any number between 900 – 998 are only official if applied to the animal prior to **March 11, 2015**



### National Uniform Ear Tagging System (NUES)

- Begins with the official state number – '41' for Minnesota
  - o In compliance with federal law, metal NUES tags must display the U.S. shield if applied to an animal March 11, 2015 or after
  - o Purchase plastic tags - Call Leedstone at (877) 608-3877 or the MN Dairy Herd Improvement Association at (800) 827-3442
  - o Purchase metal tags - Call the Ketchum Manufacturing (minimum order 100 tags) at (800) 222-0460 or National Band and Tag Company (minimum order 100 tags for producers; 1,000 tags for veterinarians) at (859) 261-2035



### American Identification Number System

- These tags are only official if applied to the animal prior to **March 11, 2015**
- Combines 'USA' with 8 or 9 digits
- Includes the National Farm Animal Identification and Records (FAIR)
  - o Administered by Holstein Association USA, Inc.



### Breed Registry Tattoos and Tags

- Acceptable for within-state movement if accompanied by documentation listing the breed registration number. Pending registrations are not acceptable. Limited use for imports – see [www.mn.gov/bah](http://www.mn.gov/bah) for more information.