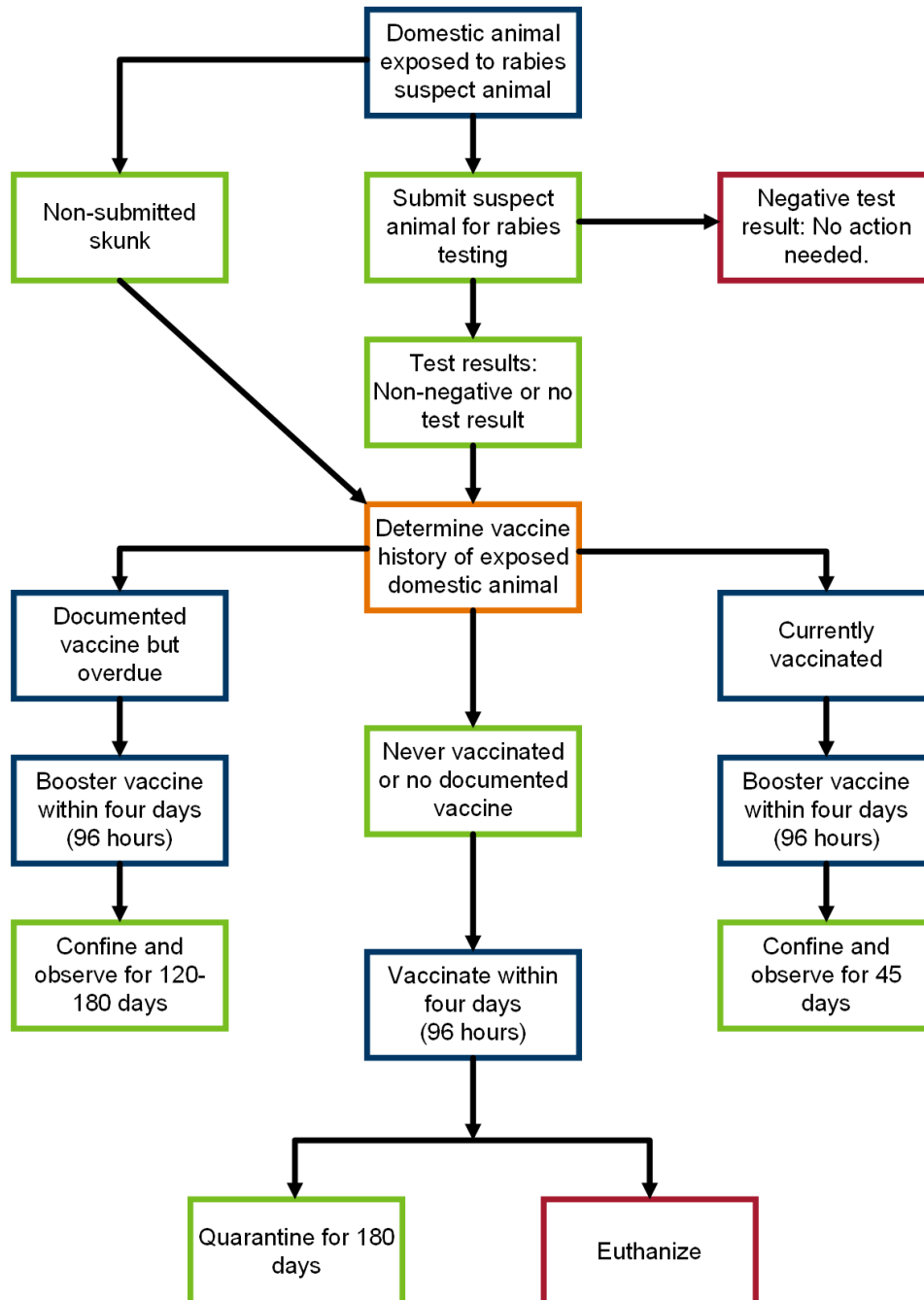


What to do if a domestic animal is exposed to a rabies suspect animal

See [Page 2](#) for this information in text format.



This diagram is a general guideline. Contact the Board of Animal Health for specific guidance on domestic animal exposure, and the Minnesota Department of Health for guidance on human exposure.

- Board of Animal Health: 651-201-6808
- Minnesota Department of Health: 651-201-5414

If a domestic animal is exposed to a rabies suspect animal:

- Submit suspect animal for rabies testing.
 - If test results are negative, then no action is needed.
 - If test results are non-negative or there is no test result, then determine the vaccine history of the exposed domestic animal.
- If the suspect animal is a non-submitted skunk, then determine the vaccine history of the exposed domestic animal.
- Determine the vaccine history of the exposed domestic animal.
 - If documented vaccine, but overdue, then booster the vaccine within four days or 96 hours and confine and observe for 120 to 180 days.
 - If currently vaccinated, then booster vaccine within four days or 96 hours and confine and observe for 45 days.
 - If never vaccinated or no documented vaccine, then vaccinate within four days or 96 hours and either
 - quarantine for 180 days or
 - euthanize

This diagram is a general guideline. Contact the Board of Animal Health for specific guidance on domestic animal exposure, and the Minnesota Department of Health for guidance on human exposure.

Board of Animal Health: 651-201-6808

Minnesota Department of Health: 651-201-5414

9/28/21